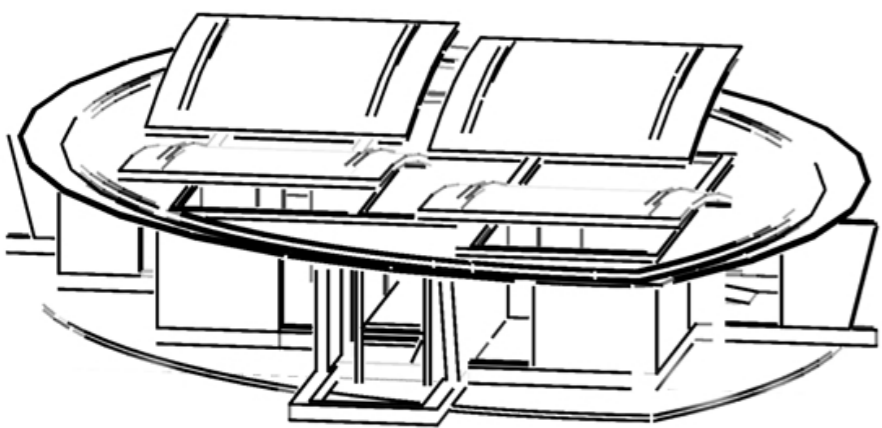


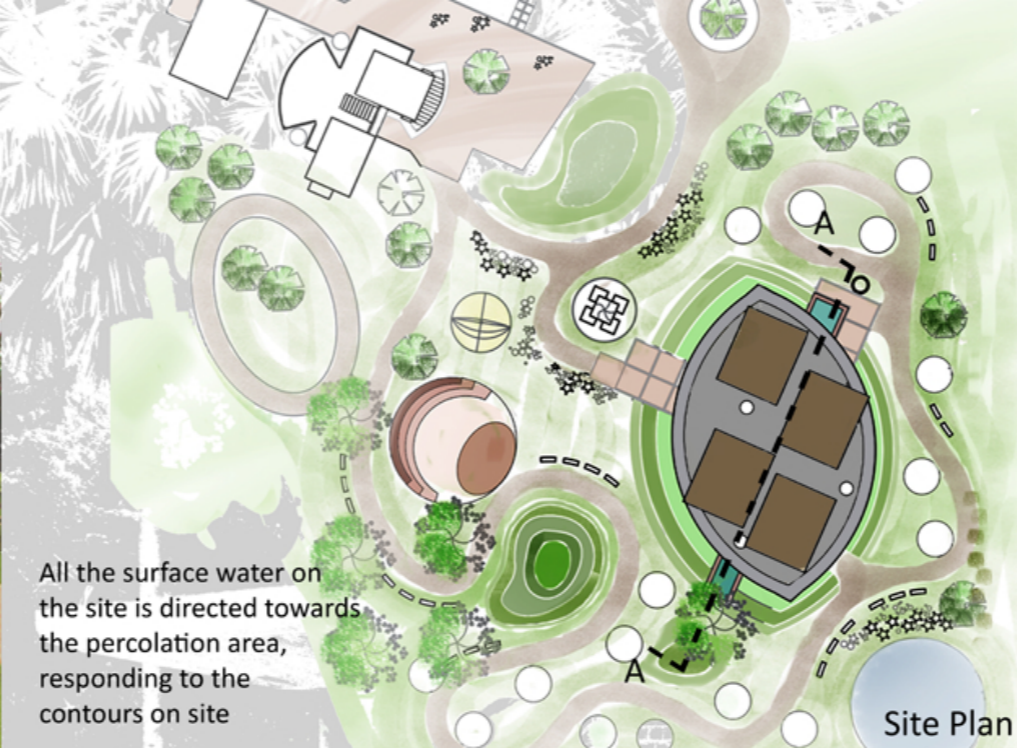
STATE ENERGY PARK



The Exhibition Building in Puducherry completed in 2009 is a joint project by REAP (Renewable Energy Agency Pondicherry) and PASIC (Puducherry Agro Service and Industries Corporation).



As a public building, it attempts to be a landmark in its zone representing in its form - the time, context and function. The built form is accentuated by the clear extent of the lower roof which has a regular geometric shape.



All the surface water on the site is directed towards the percolation area, responding to the contours on site

Site Plan

This project consists of built space to house permanent and interactive exhibits that aim to sensitise the people about energy efficiency and the practical uses of alternative and renewable sources of energy, with the use of simple models and creative engagement.

The building communicates this intent by incorporating into its architectural language the elements of energy efficiency and water conservation.

The energy efficiency in the building is achieved by the use of wide overhangs, ventilated roofs and shaded walls that minimize heat gain.

The water conservation is achieved by bringing down the entire roof water into the landscaped waterbodies.

The walls of the building are made from fly ash bricks. Fly ash is a material that REAP would like to propose as a main stream building material, and use of alternative material in public buildings is one of the ways to raise awareness towards it.

Attempt has been made to keep all the materials exposed and not plastered and painted. This not only serves as an honest approach towards the materials used and an attempt at construction level itself to reach a high standard, but also reduces the costs of maintenance.



West Elevation

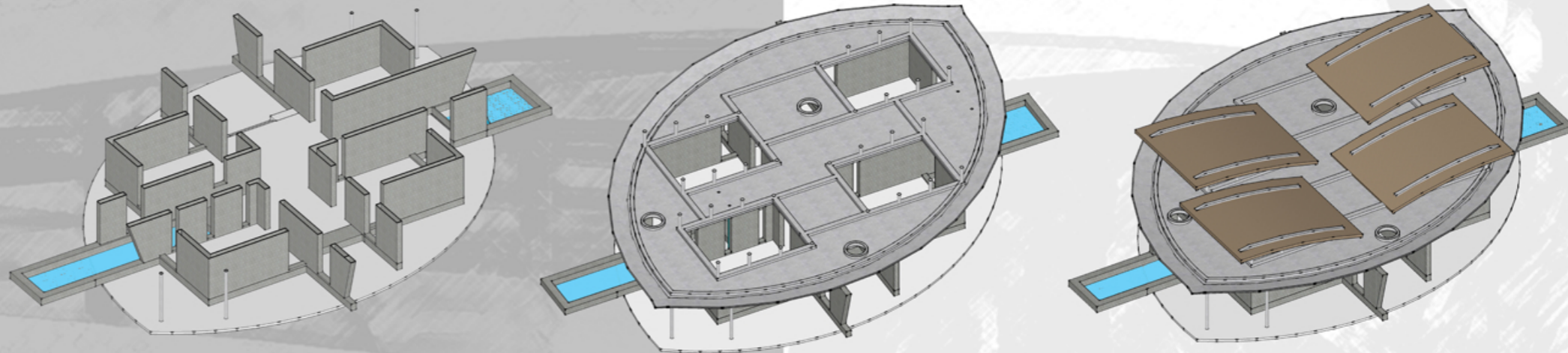
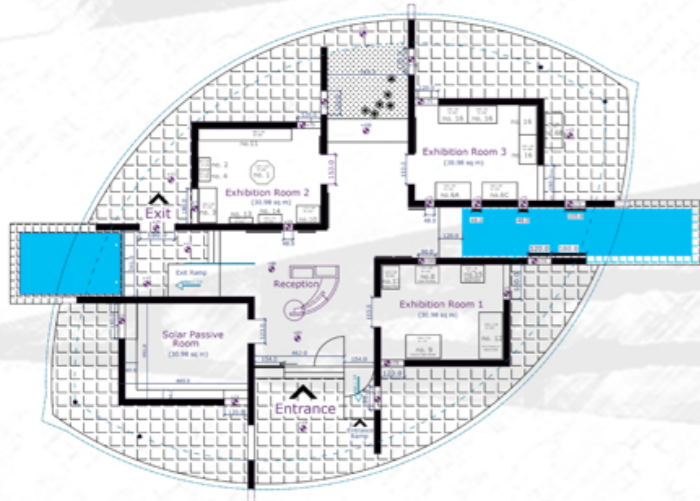


Section through the waterbodies (A A)





The lifted roofs of the rooms become part of visual composition and provide skylights for glare free light while ventilating the entire space and the ceiling.



Within this shape, the rooms and circulation space are arranged, such that there is a collection of similar exhibits in a given room and the circulation leads the viewers from one experience to another.

The encompassing roof gives an elemental variety and stability to the built form, and also shades the walls from direct light and rain. The circulation spaces are under the larger roof with skylights at certain locations and with windows that look out into the green and the water bodies, whereas the rooms have roofs that are cut out from the slab and are lifted up to become part of the entire formation.

Thus the Exhibition building exhibits not only the internal exhibits for sensitization towards energy sources, but exhibits itself as an embodiment of architecture that is fundamentally responsive to climate, energy efficiency, water conservation and low maintenance along with being an interesting form for the aesthetics of surrounding landscape.



CLIENT - This paragraph contains the information about the client. This paragraph contains the information about the client. This paragraph contains the information about the client.



PATH - Planning and Architecture Towards Holistic development - is an architecture and planning studio in Auroville which endeavors to create sustainable and harmonious designs in planning, architecture and interiors.

PATH, Progress Community, Auroville-605101
path@auroville.org.in

PLANNING & ARCHITECTURE TOWARDS HOLISTIC DEVELOPMENT